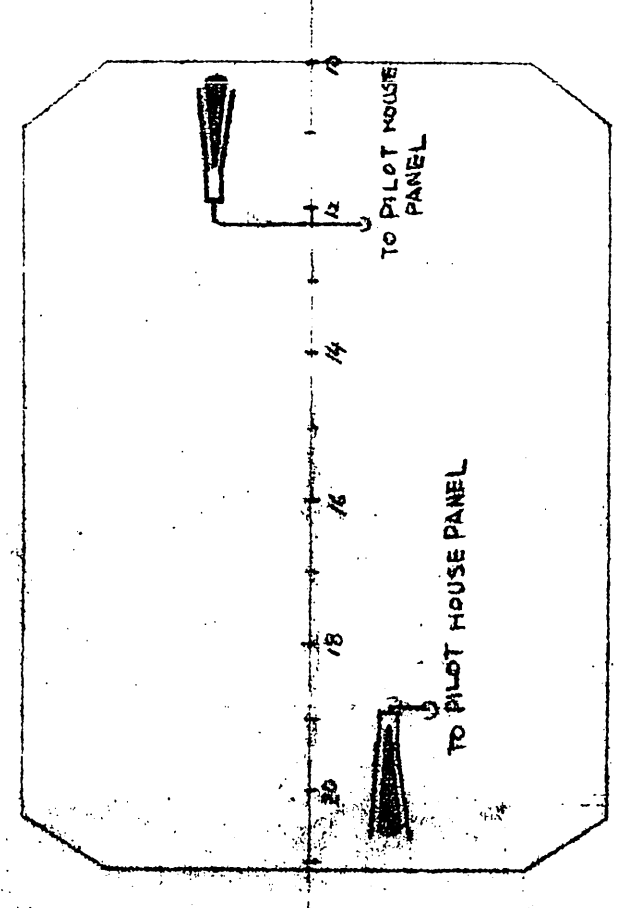
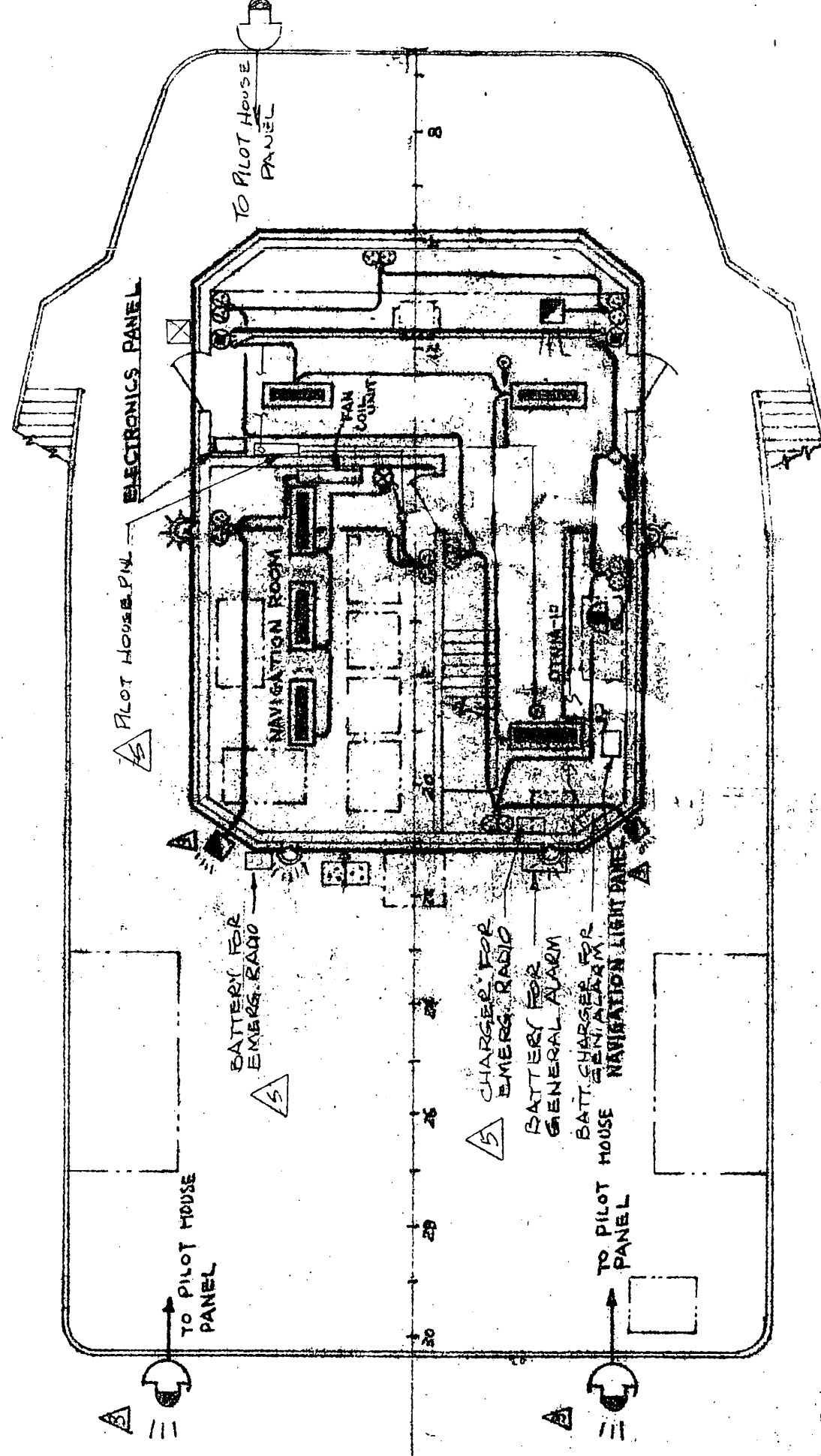


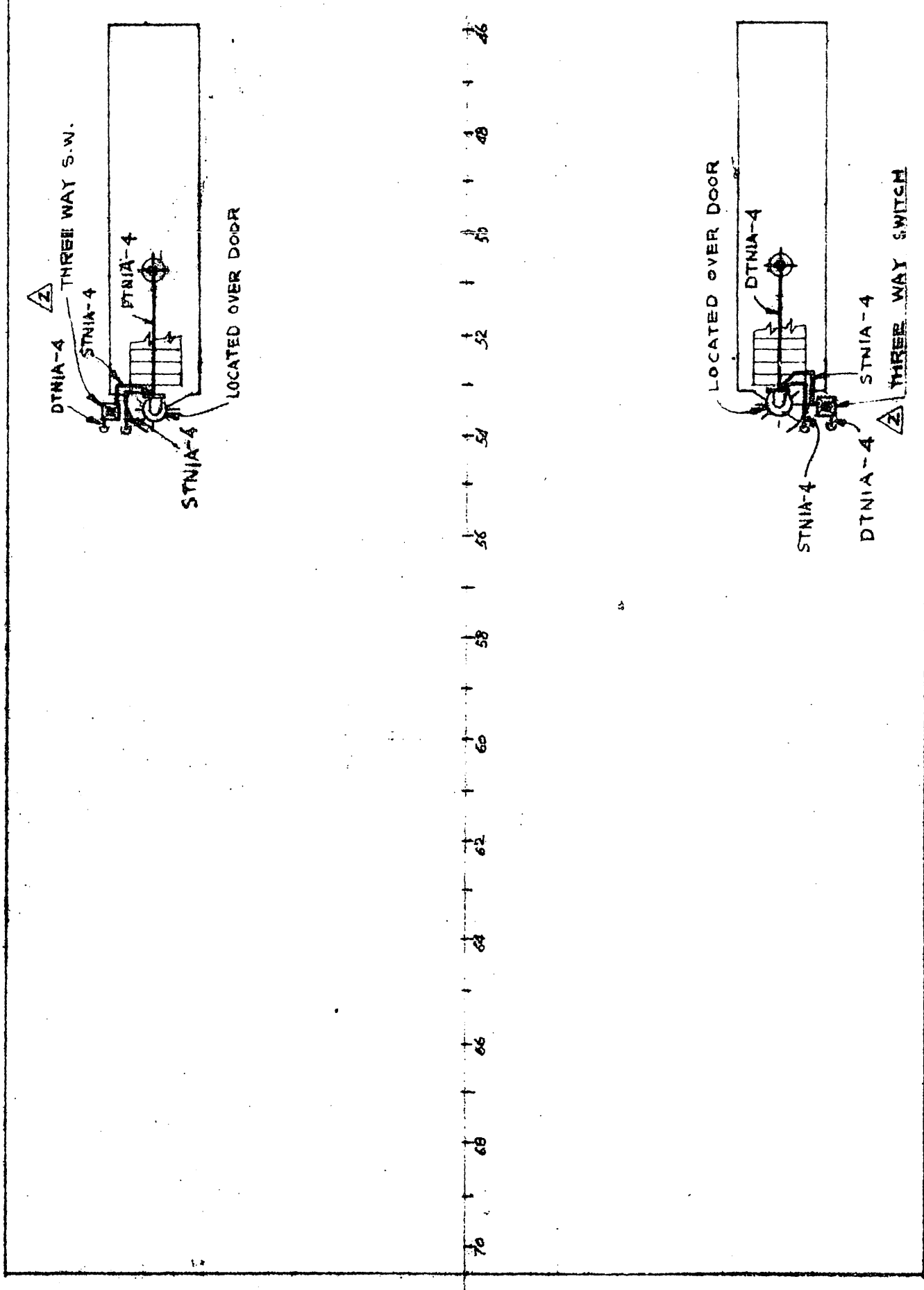
REV.	DATE	DESCRIPTION	BY	CHKD.
1	10/1/58	GENERAL DESCRIPTION OF LIGHTING WIRING ON MAIN DECK, FOCSE DECK, PILOT HOUSE, BATTERY ROOM, CHART ROOM, MEN'S ROOM, WOMEN'S ROOM, GALLEY, LUNGE, STORE ROOM, ENGINE ROOM, AND ELECTRIC DISTRIBUTION PANEL. REVISED THE WIRING ON MAIN DECK AND CHART ROOM.	AVP	AVP
2	11/1/58	ADDED WATER WASH AND DRYER IN MEN'S ROOM AND WOMEN'S ROOM. REVISED WIRING ON MAIN DECK AND CHART ROOM TO ACCOMMODATE THESE FIXTURES.	AVP	AVP
3	1/1/59	ADDED NOTE FOR GENERAL ALARM LISTED IN LEGEND TO BE OF U.S.C.G. APPROVED TYPE.	AVP	AVP
4	1/1/59	REVISED DVS. PER AS BUILT INSTALLATION.	AVP	AVP



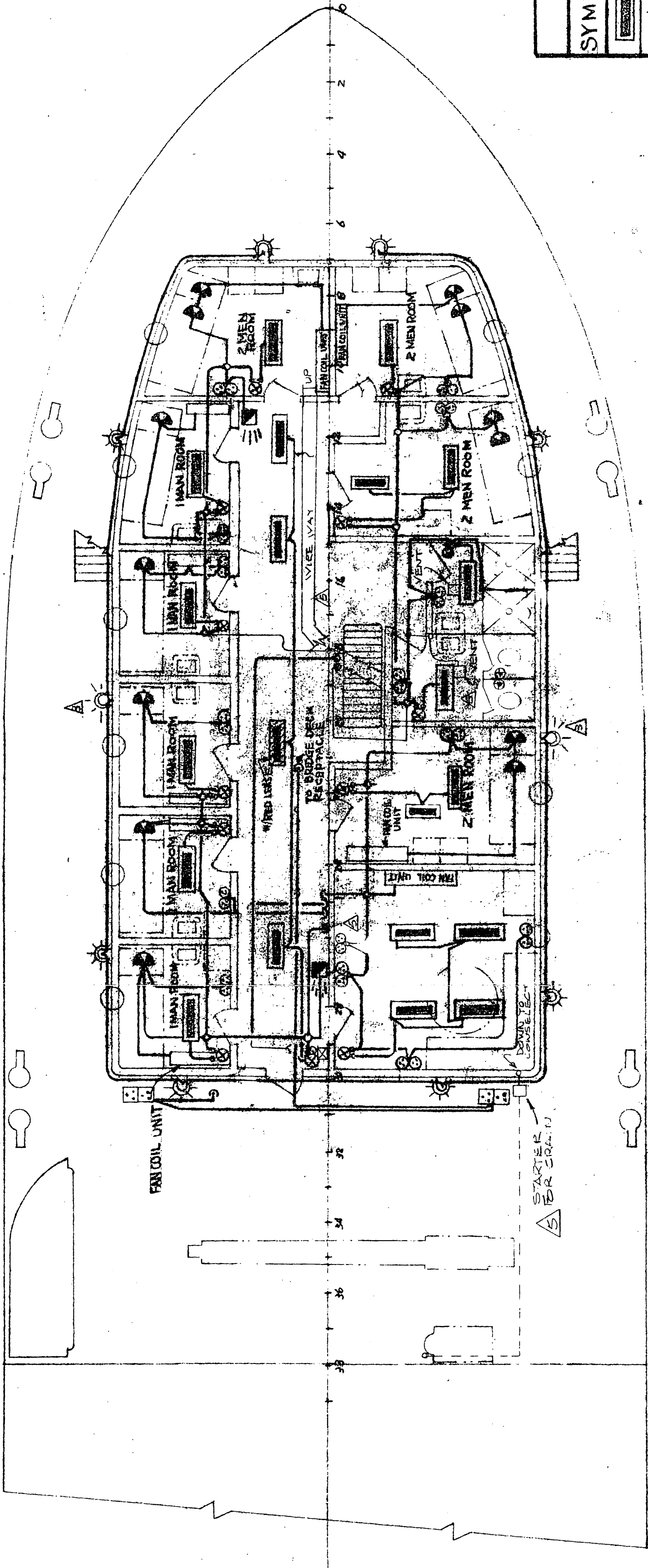
LIGHTING WIRING ON THE ROOF  
SCALE: 3/16"=1'-0"



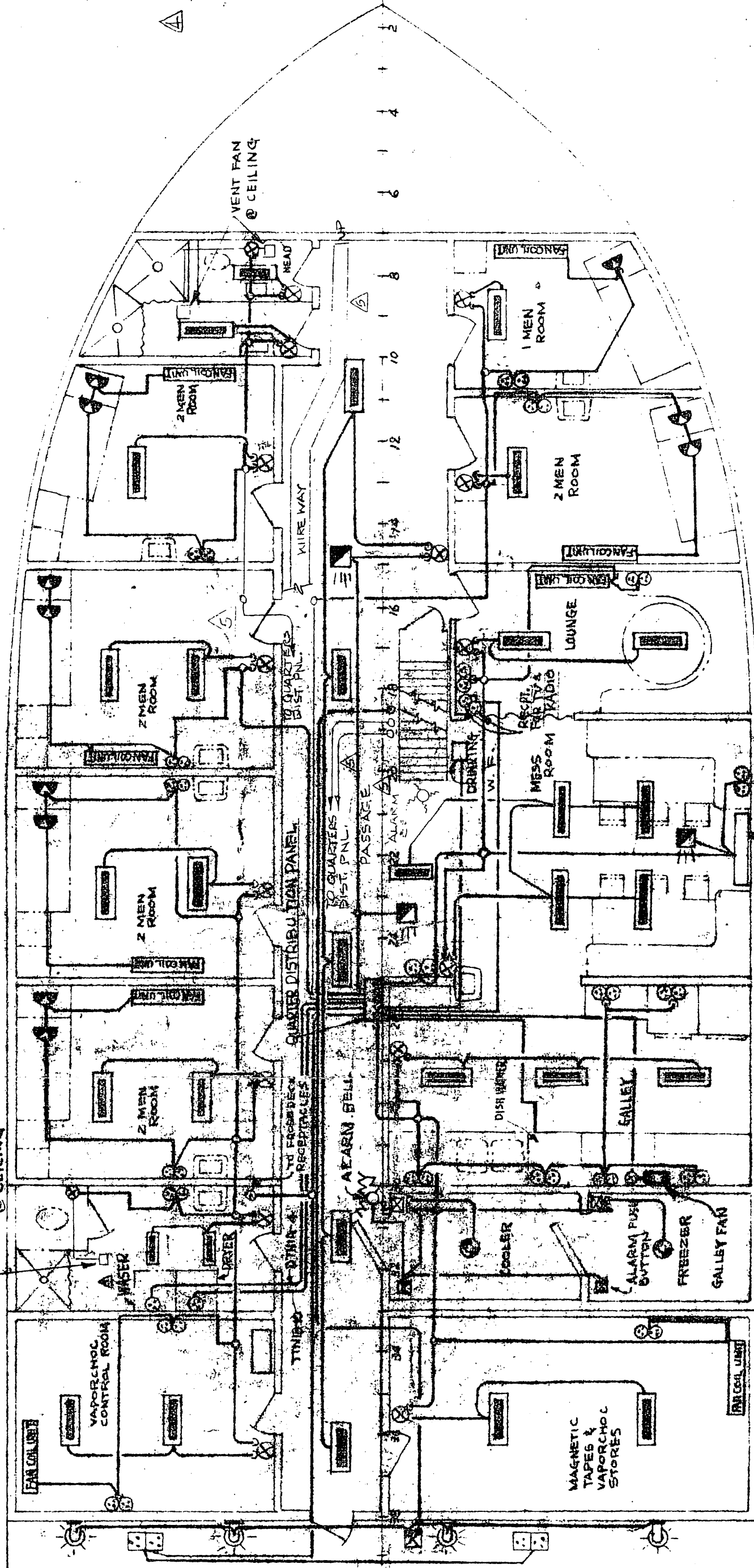
LIGHTING WIRING IN PILOT HOUSE  
SCALE: 3/16"=1'-0"



LIGHTING WIRING ON MAIN DECK  
SCALE: 3/16"=1'-0"



LIGHTING WIRING ON FOCSE DECK  
SCALE: 3/16"=1'-0"



SYMBOL	DESCRIPTION	REMARKS
(Symbol)	FLUORESCENT CEILING LIGHT FIXTURE 1' x 4' MODEL # 1100	PAULUHN MODEL # 1100
(Symbol)	WATER PROOF BALL BEAD FIXTURE 1" DIA. MODEL # 1100	PAULUHN MODEL # 1100
(Symbol)	BERTH LIGHT W/ 1" x 4" BALL BEAD FIXTURE AND TABLE SWITCH	PAULUHN MODEL # 1100
(Symbol)	CHART TABLE LIGHT FLUORESCENT FIXTURE W/ SWITCH	PAULUHN MODEL # 1100
(Symbol)	INCANDESCENT CEILING FIXTURE VAPOR PROOF	PAULUHN MODEL # 1100
(Symbol)	FLOOD LIGHT	PAULUHN MODEL # 1100
(Symbol)	SPOT LIGHT 1"	PAULUHN MODEL # 1100
(Symbol)	NON WATER PROOF DOUBLE RECEPTACLE	PAULUHN MODEL # 1100
(Symbol)	1" DIA. X 1/2" DEPTH WATER PROOF BALL BEAD FIXTURE	PAULUHN MODEL # 1100
(Symbol)	NON WATER PROOF SWITCH BOX FLUSH MOUNTING SURFACE	PAULUHN MODEL # 1100
(Symbol)	WATER PROOF SWITCH BOX SINGLE POLE 10 AMP 250 V	PAULUHN MODEL # 1100
(Symbol)	ALARM - BELL	PAULUHN MODEL # 1100
(Symbol)	EMERGENCY LIGHT	PAULUHN MODEL # 1100
(Symbol)	THREE WAY SWITCH W/ WED LENS	PAULUHN MODEL # 1100
(Symbol)	FLUORESCENT CEILING FIXTURE W/ WED LENS	PAULUHN MODEL # 1100
(Symbol)	WATER PROOF 2 GANG RECEPTACLE	PAULUHN MODEL # 1100

NOTE: ALL WIRE TO BE DTNIA-4 EXCEPT NOTED OTHERWISE TO ELECTRICIAN PANEL AS RESERVED

**DESIGN ASSOCIATES, INC.**  
NAVAL ARCHITECTS NEW ORLEANS, LA.  
MARINE ENGINEERS

TIDE WATER MARINE SERVICE  
143' x 36' x 10' SEISMIC VESSEL  
LIGHTING WIRING ARRANGEMENT

Drawn: TAK Date: 7/1/58  
Traced: Date: 7/1/58  
Approved: Date: 7/1/58  
Sheet: 01 Drawing No. C-217-39 Revision Mark: A